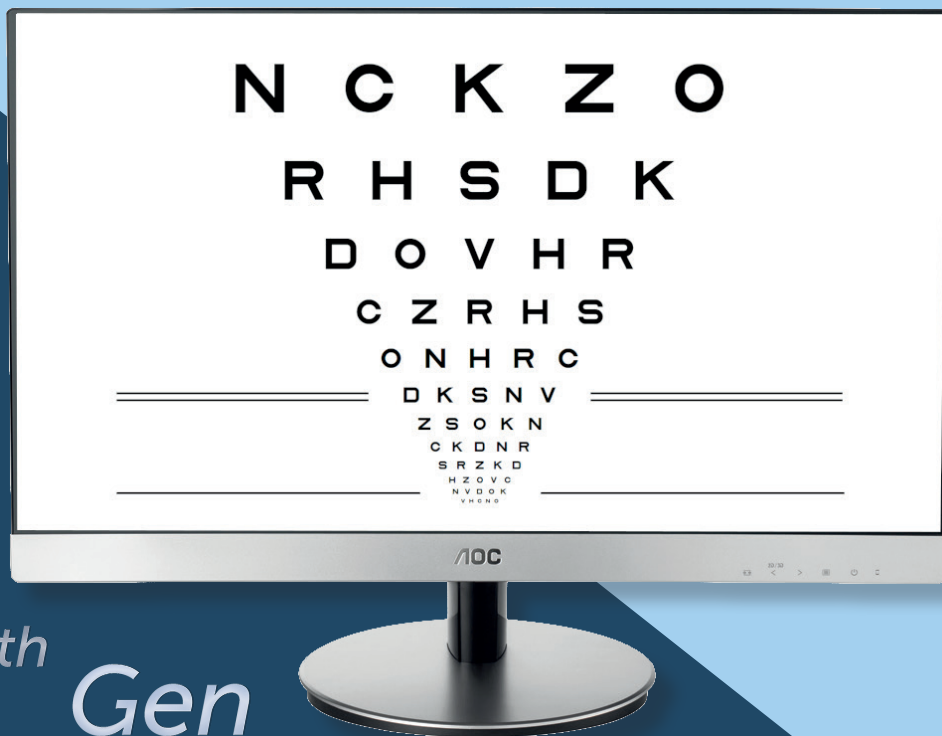


# AOC

advanced ophthalmic chart



EYE NEXT



4<sup>th</sup>  
Gen

*...the ultimate solution for all your acuity chart needs!*



**4th Gen:** technological expertise and a passion for improving vision.

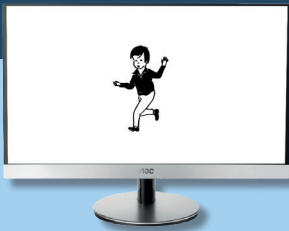
The goal of giving patients high-quality service and advanced precision inspired EyeNext throughout the entire process of designing **4th Gen AOC digital ophthalmic charts**.

Built to last with unbeatable reliability. Each 4th Gen AOC made by EyeNext reflects more than 20 years of innovation, know-how and cutting-edge engineering in designing digital ophthalmic charts to meet and exceed the expectations of eye-care professionals for reliability and durability.

# Models

A complete line of quality digital charts for everything a vision professional needs. AOC instruments feature superior clinical quality, absolute reliability, and excellent value.

## STYLE

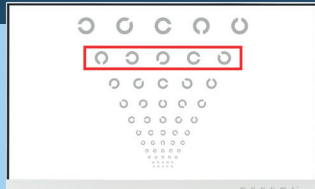


AOC-23

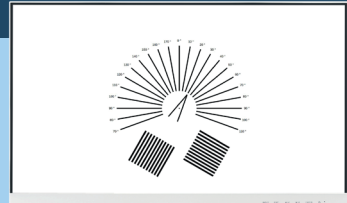


AOC-27

## PRO



AOC-i24

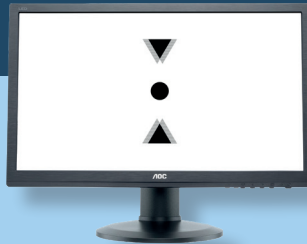


AOC-i27

## POLA



AOC-24 POLA Linear



AOC-24 POLA Circular

# Instrument sets: AOC + NOC

Advanced Ophthalmic Chart (AOC) is a state-of-the-art digital ophthalmic chart featuring a sleek design and an extensive selection of tests conducted meticulously up to standards. AOC has a wireless remote console with visual display that includes optotypes for near vision eye tests (NOC).

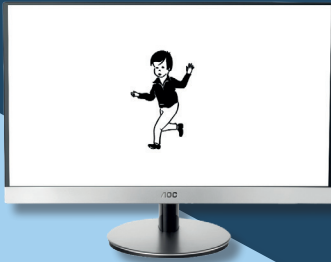
The complete set is expertly designed. AOC + NOC give you a comprehensive tool for modern and accurate subjective refraction testing at an affordable price.



- All-in-one LCD vision chart.
- FULL-HD, LED professional LCD screen.
- Built-in microcomputer with LINUX operating system for performance and lasting reliability.
- Selectable working distance from 1.8 to 8 m in increments of 5 cm, accommodating any size examination room. Mirror function.
- Randomized testing. Wide-ranging applications, from severely impaired vision (0.1/10) to hyperacuity (20/10).
- Calibrated brightness for accurate contrast levels.
- Special modes for LOW VISION and CHILD examinations. Sequence of tests based on the individual preferences to streamline clinical use.
- The remote console makes it immediately easy to use the AOC and puts the professional in a better working position.
- Multimedia features: Full-HD videos loading and playback, tutorial slideshows and entertainment movies for kids.
- The software can be easily and automatically updated free of charge.
- Convenient table stand and wall mounting.
- Remote access for technical assistance just connecting the AOC to an ethernet cable.

# ALL-IN-ONE Chart System Lines

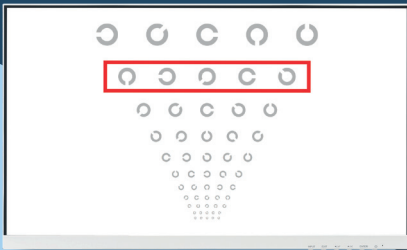
STYLE



AOC-23, AOC-27

- 23" or 27" LCD screen, borderless, IPS technology.
- More than 60 dynamic, interactive tests.
- 5 programs: Visual Acuity, Refraction, Contrast Sensitivity, Binocular, Preferred.
- IR remote control or Remote Console 8" touch.

PRO



AOC-i24, AOC-i27

- 24" or 27" LCD screen, high performance display and visual comfort.
- Advanced engineering.
- 5 programs + automatic driving license exam.
- Ultra-slim borderless design, matte white.

POLA



AOC-24 POLA Linear, AOC-24 POLA Circular

- Unique solution for both monocular and binocular vision testing.
- High-quality linear and circular 24" LED LCD.
- Unique polarization separation without any "ghost image".
- MKH test sequence according to Haase.

These are a few of each line's key features.  
A full list of features is on page 14.

# Eye examination for distance vision (AOC)

All tests are dynamic and interactive. The touch screen remote console makes it intuitive to control and easy to use its features.

**Child/illiterate** and **low-vision** modes help streamline clinical use.

ILLITERATE

LOW VISION

## OPTIONS



Single  
character



Single  
row



Single  
column



Red/green  
shapes



White/black  
inversion

## DISPLAY MODES



No  
crowding



Crowding



ETDRS

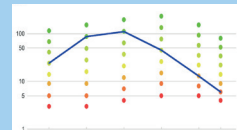
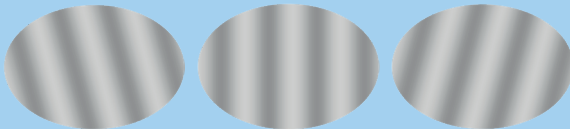
# TEST

**VISUAL ACUITY:** Sloan Letters, Landolt Rings (ISO 8596), Tumbling E, Numbers, Snellen Letters, HOTV, Pigassou Child Symbols, Core Child Symbols, Playstation, Allen Preschool, Sloan Non Random Letters, Landolt C 4 symbols.

**ETDRS:** Tables 1, 2, R with contrast function. Three view modes: standard, IOL and mesopic. Illiterate mode and masking function.

**REFRACTION:** Myopia (Red and Green), Clock Dial, Points, Half clock, Astigmatism - Fan and Block, Grid test, Binocular Balance, Amsler's Grid.

**CONTRAST SENSITIVITY:** Small Letter Contrast test, Pelli-Robson @1m, Contrast Sensitivity - Gabor patches, Ishihara color blindness test. All the optotype charts have a contrast function at 0.15 Log steps.



**BINOCULAR VISION:** Points of Fix, Maddox, Worth, Schober test, Sheard test, Phoria & Associated Phoria tests, Aniseikonia, OXO - Mallet test, Random dots Steps/Hand, Osterberg Stereo 2/4, Duochrome, Pictures for Retinoscopy.

**MKH:** Cross test, Pointer test, Rectangle test, Stereo Triangle, Balance test, Differential D6/D8 stereo test, Stereo test, Cowen test.



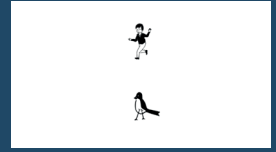
# Examples:



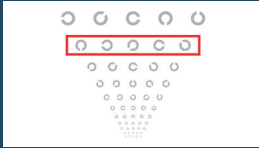
Sloan Letter



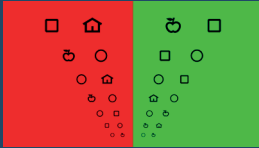
Tumbling E with single character masking



Illiterate / children chart with vertical masking



Landolt C with contrast and crowding



Test with red-green shape



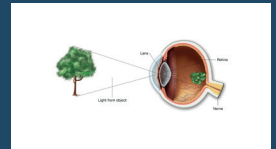
Small Letter Contrast test



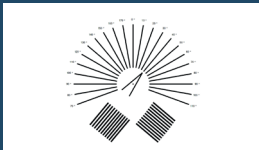
ETDRS with IOL view mode



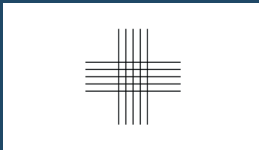
Binocular balance (\*)



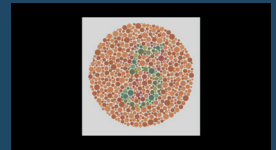
Eye pictures



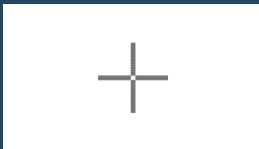
Astigmatism Fan and Block



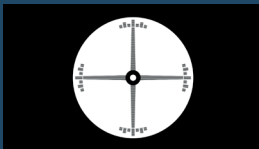
Jackson Cross



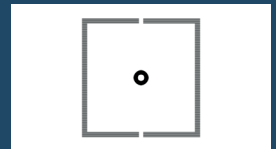
Ishihara 25 plates



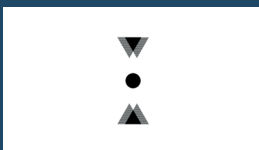
MKH Cross (\*)



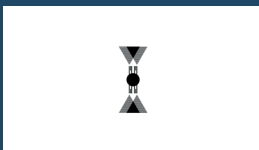
MKH Indicator (\*)



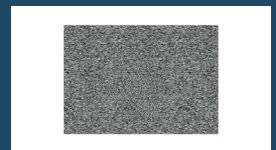
MKH Coincidence (\*)



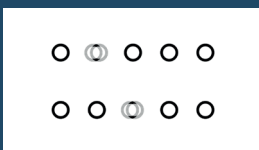
MKH Stereo triangle (\*)



MKH Stereo Valence (\*)



MKH Random dot (\*)



MKH Differential stereo (\*)



MKH Cowen (\*)



Number Plate test

(\*) Positive polarized tests are available in AOC-24 Pola Linear and AOC-24 Pola Circular vision charts. All other AOC vision systems implement the stereoscopic tests in red-green mode.

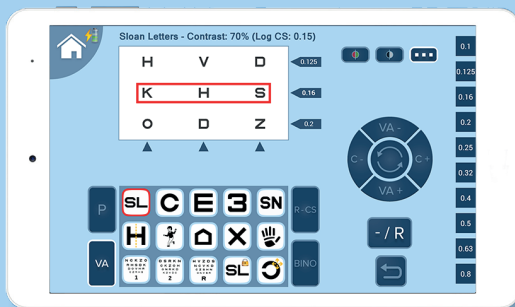
# Remote Console

The touch screen remote control makes everything quick and easy.

Adjust the visual acuity value, add masking or crowding, move to low-vision mode, change tests or programs. Everything can be done with just a simple tap on the icon.

This frees up professionals to focus exclusively on their patients while keeping an eye on all parameters.

From the very first use, the remote console can give a thorough exam with a few easy steps, taking full advantage of the AOC chart system's potential.



- Reduced examination time
- Intuitive chart control
- Improved working position
- More attention on patients

# Eye examination for near vision (NOC)

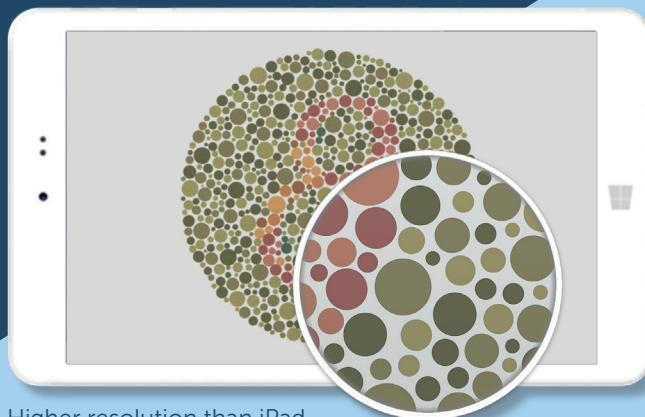
To meet the different needs of subjective refraction examination, the instrument set includes a near vision chart, the NOC (Near Ophthalmic Chart).

NOC uses an 8" RETINA screen. In keeping with high scientific standards, it gives over 40 tests, divided into 3 groups of tests:

- reading,
- measurement,
- quality of vision.

NOC also provides:

- ETDRS charts 1, 2, and R for video terminals (70 cm distance examinations),
- two tests for assessing reaction times to light and sound simple stimuli,
- sequence of tests based on the individual preferences to streamline clinical use.



Higher resolution than iPad  
Air screen!

# Driver's license

The driver's license examination (Groups 1 and 2) can be done with an automatic procedure by merely responding "Seen/Not seen" to the stimuli.

The vision chart automatically calculates thresholds and then rapidly performs the following tests:

- Visual Acuity OD/OS,
- Contrast Sensitivity,
- Twilight Vision (mesopic visual acuity),
- Glare Sensitivity (\*),
- Glare Recovery Time (\*\*),

in accordance with 2006/126/CE and 2009/113/CE.

Set of 2 LED remote controlled lights (\*) and a certified LED light pen (\*\*) are included.

At the end of the examination, the AOC vision chart sends a report to the wireless printer and to the smartphone / PC via bluetooth.  
Pre-filled hardcopy included.

Pre-filled booklets included in delivery.



# Common features

- Working distance: 2–8 m, 5 cm steps. Mirror option.
- Remote controls: IR remote control. Remote console 8" (optional).
- View modes: Standard, Child (or Illiterate), Low Vision.
- Programs: Visual Acuity, Refraction, Contrast Sensitivity, Binocular, Preferred. Driver's license with automatic examination, lamp kit with holders and remote control (optional).
- Additional test: integrated LED for Maddox Rod Test.
- WiFi printing and BT forwarding to smartphone/PC of driver's license report and contrast sensitivity function.
- Multimedia functions: fullscreen video in Full-HD, speakers included. Animation for entertaining children. Illustrations of eye anatomy and eye diseases. Personal videos and slideshows from USB key.
- Accessories: red-green glasses, polarized glasses (only for the AOC-24 Pola), USB flash drive for software recovery and updates.
- Screen features: 16.7M colors. Brightness: dynamic and calibrated background and foreground brightness up to 250 cd/m<sup>2</sup> (300 cd/m<sup>2</sup> for 27"). Contrast: 1000:1 typical
- Table mounting: yes, stand included (position adjustments: height, swivel, tilt).
- Wall mounting: yes, stand included. VESA 75x75 or 100x100 universal mounting bracket.
- Power requirement: 100-240V 50/60Hz. Programmable stand-by and power off. Standby: < 0.5W.
- Security: Kensington-lock™ prepared.
- Compliance: Directive 93/42/EEC (Class I). UNI EN ISO 8596-8597, 2006/126/CE, 2009/113/CE.
- Designed and made in Italy using European technology. No assembly required. Maintenance free.
- Remote assistance: yes, by connecting to ethernet cable.
- Languages: English, French, German, Italian, Spanish.



EYENEXT guarantees the quality of all its products. After QA checks, each device is run for 72 hours non-stop to ensure component reliability.

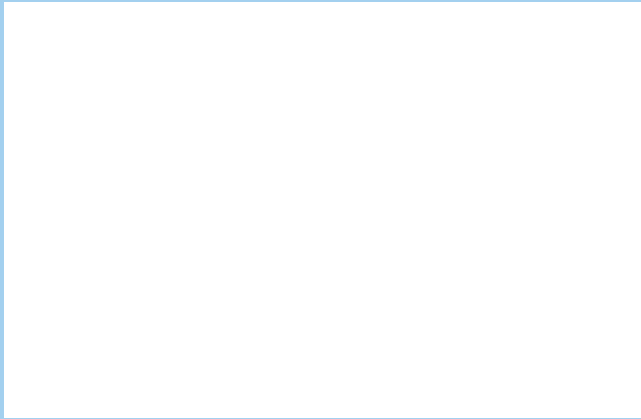
## AOC Style

## AOC Pro

## AOC Pola

Model name	AOC-23	AOC-27	AOC-i24	AOC-i27	AOC-24 POLA Linear	AOC-24 POLA Circular
Polarized	X	X	X	X	linear	circular
Screen size	23"	27"	24"	27"	24"	
Resolution	Full HD, 1920 x 1080 (2.1 megapixel)					
Viewing performance	high		enhanced		100% separation	
Design	borderless				normal	
Colour	silver		white		black	
Screen technology	IPS, LED, matte finish					
Dimensions	53x33x5cm, 4Kg	62x38x5cm, 5Kg	54x33x5cm, 5Kg	61x37x5cm, 6Kg	57x34x5cm, 5Kg	
Package dimensions	60x47x14cm, 8Kg	71x54x16cm, 9Kg	62x46x20cm, 9Kg	73x44x20cm, 10Kg	69x42x19cm, 9Kg	
Energy efficiency class	A		A+		A	
Remote Assistance	yes, included					
Warranty	5 years (limited to 2 years for the LCD screen and the accessories)					





## Advanced Ophthalmic Chart

All rights reserved. The names of companies and products mentioned in this leaflet may be trademarks of their respective owners.

The technical features of the instrument and its accessories may be updated at any time and without notice. To obtain an updated description we suggest visiting the website [www.aocvisioncharts.com](http://www.aocvisioncharts.com).

Advanced Ophthalmic Chart is designed in Italy.

Rev 202101